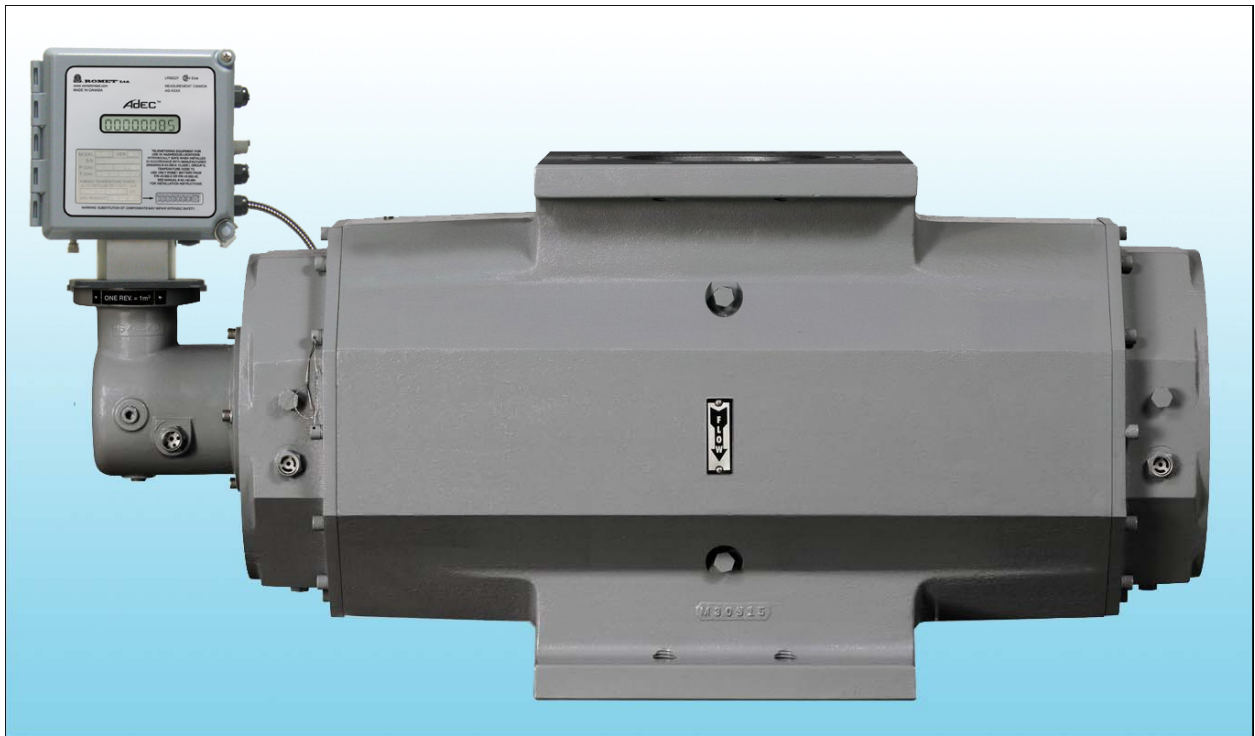


**ROMIET**®



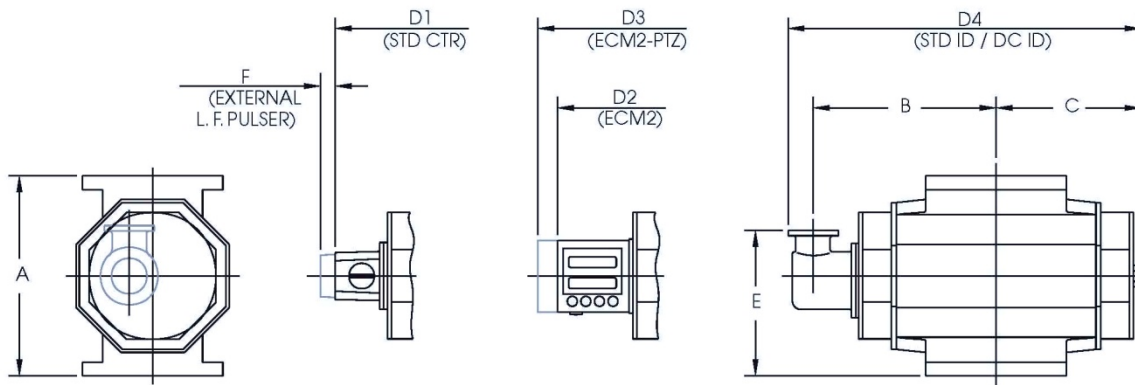
**ROTARY GAS METERS**

**RM56000 . RM1600 . G1000**

## TECHNICAL SPECIFICATIONS

Meter Size	RM56000 Imperial	RM1600 & G1000 Metric
MAOP	175 psig	12 bar
Flow Capacity	56000 acfh	1600 m <sup>3</sup> /h
Rangeability @ ±1% Error	120:1	120:1
Rangeability @ ±2% Error	200:1	200:1
Qmin @ ±1% Error	467 acfh	13.2 m <sup>3</sup> /h
Qmin @ ±2% Error	280 acfh	8.0 m <sup>3</sup> /h
Start Flow Rate	26 acfh	0.74 m <sup>3</sup> /h
Differential @ Start Flow Rate	0.10 IWC	25 Pa (0.25 mbar)
Counter Resolution	10 cf	0.1 m <sup>3</sup>
Instrument Drive Rate	100 cf/rev	1.0 m <sup>3</sup> /rev
LF Pulser (Optional on STD CTR Version)	100 cf/pulse	1.0 m <sup>3</sup> /pulse
Weight	189 lbs	86 kg
Flange Size	RM56000 & RM1600: 6" ANSI 125/150 F.F. G1000: PN16 150 mm	

\*For other sizes, refer to Rotary Gas Meters RM Imperial and G Metric Series literature.



Meter Model	A	B	C	D1	D2	D3	D4	E	F
RM56000	16.00"	18.22"	14.70"	29.00"	31.50"	33.02"	34.92"	12.00"	1.25"
G1000 & RM1600	406 mm	463 mm	373 mm	737 mm	800 mm	839 mm	887 mm	305 mm	32 mm

Note: Add 0.37" (9.4 mm) to dimension C, D2 and D3 for backup index option.

The values quoted are typical of normal production. They do not constitute a specification. Romet reserves the right to change any information in this literature without notice. All of the information and data in this literature have been carefully compiled and thoroughly checked. However, Romet Limited will not assume responsibility for any possible errors or omissions. Romet holds the rights to the material presented in this literature and to the name of Romet.



**IMAC Systems, Inc.**  
90 Main Street, PO Box 1605  
Tullytown, PA 19007

1-800-955-4GAS  
Phone: (215) 946-2200  
Fax: (215) 943-2984

[sales@imacsystems.com](mailto:sales@imacsystems.com)